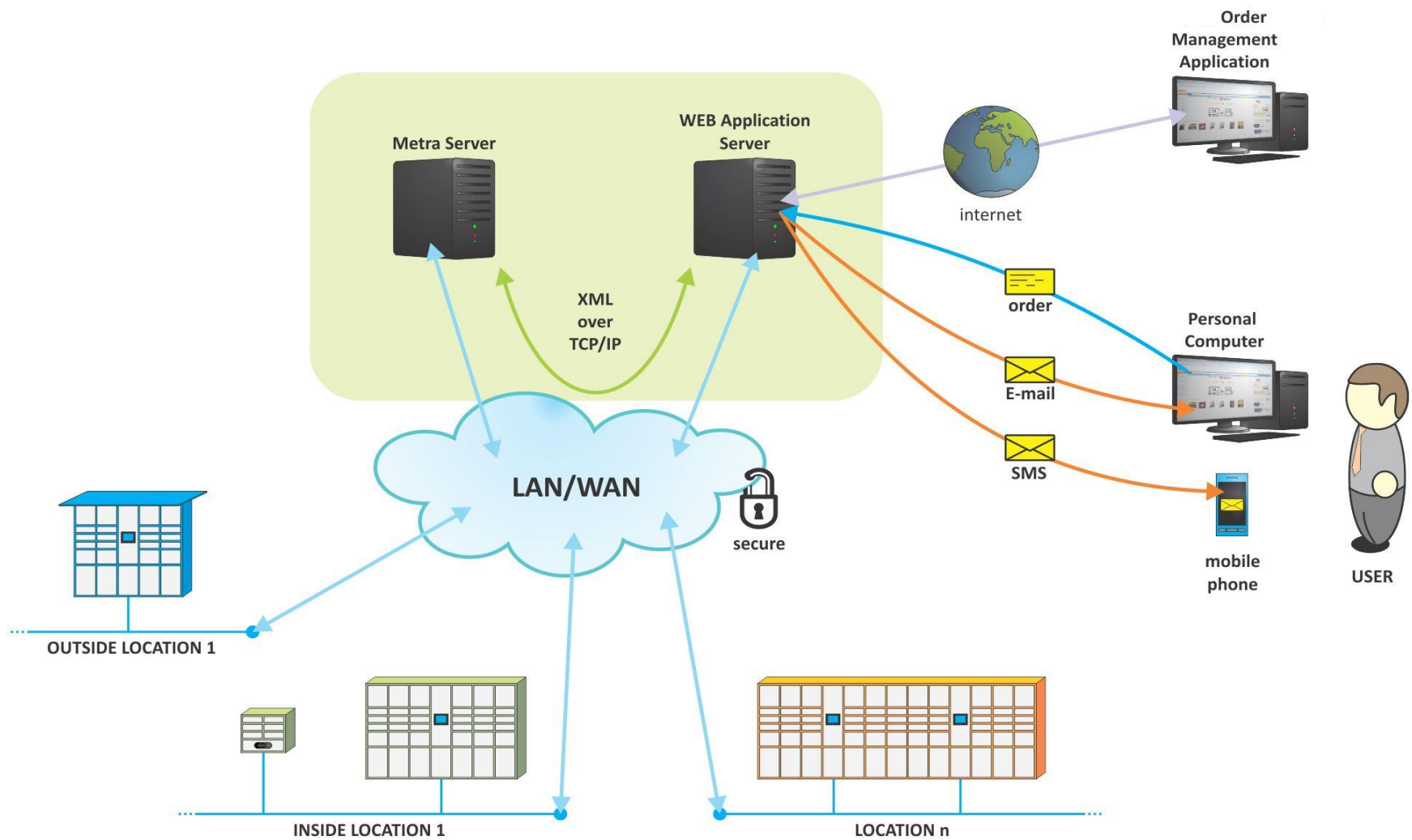


Component of an integrated system

Logistics solution, payment system and electronic lockers make it possible for delivery lockers system to work.



Electronic locking system overview



Open-concept approach

HIGHLY CUSTOMIZABLE SYSTEM

- Define locker location names.
- Define various locker sizes per each location.
- Define user interface to be used (Metra or 3rd Party).
- Define capacity per location (1-N lockers).
- Define usage protocol (Internal & external use).
- Define locker material (not limited to metal).
- Place lockers also in business buildings and other specific places competition is not considering due to limitations.

An IoT system

Purpose build new generation of system uses an IoT approach, allowing each locker controller (controlling 1-64 lockers) to connect to server automatically, by itself.

Therefore reducing the cost of network equipment used in the past.

IoT approach also lowers the number of points able to cause failure to a minimum. Especially important with such mission-critical systems.



**INTERNET
OF THINGS**

Lockers

Metra system is not limited to metal lockers. We are able to use HPL, MDF, wood and other materials also.

This way also smaller, business building delivery locations could be established, seemlesly blending into the environment.

Based on your selection of a locker manufacturer, we will agree with them how the system should be integrated and support them during this process.



Local backup system

Depending on the final system specification, also local backup server at each lockers location can be used, allowing packages to be picked up even in case internet connection to main server fails.

Metra specialized component, called NC NET, can be used.



Integrations and Connectivity

System can easily be integrated with other IT systems that will form a complete solution due to:

- XML data exchange using well known protocols (TCP/IP, ...).
- Pre-defined integration point to be used.
- Engineering support during the integration process.



Reporting



System is purposed to provide a large amount of data about lockers usage and other activities.

You are able to use 3rd party solution to export data to.

Security management

Your guidelines regarding the IT infrastructure and security restrictions will be respected.

Metra is certified by Bureau Veritas for information security and process management.



ISO 27001

BUREAU VERITAS
Certification



ISO 9001

BUREAU VERITAS
Certification



Security management

During our previous experience on building system worldwide, we have used these two database approaches.



Local support and maintenance

Metra is locally present through a cooperation with an established Polish company, working on technical systems implementation and integrations for more than 20 years.

Next to Poland, we cover more than 42 countries.

Local partner and Metra are able to offer you:

- Consultancy during the system design process.
- Preparation of implementation (locker manufacturer, IT details, preparing the environment, pilot installation, ...).
- Implementation of live locations and system setting-up.
- Curative and preventive maintenance and support during the system use.

References

We are not allowed to share all of the references, but we have references in these fields.

PUBLIC SERVICES

- Post, packages
- Medical supplies

PRIVATE SERVICES

- Online retail,
- Rental, dry cleaning

COMPANIES / OFFICES

- Secure company documents
- General items delivery



Reference 1

C-BOX – cleaner's box

<https://vimeo.com/157128925>



Reference 2

GROCER LOCK – Online grocery store

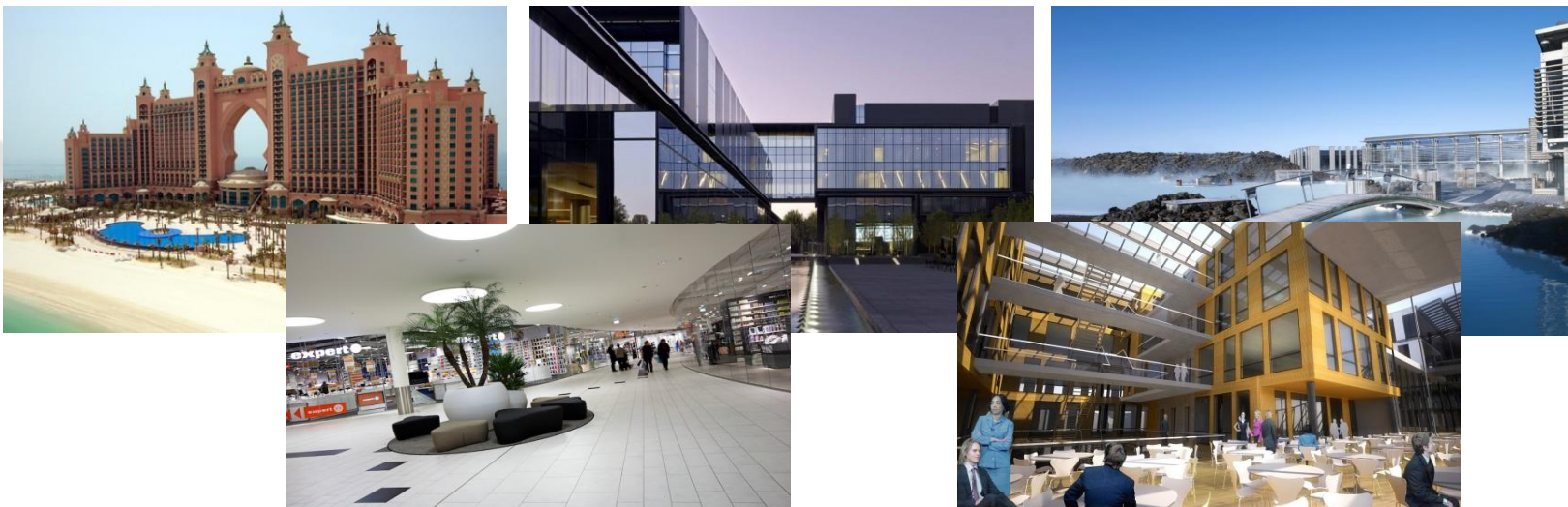
<https://www.youtube.com/watch?v=3yRX5Qwqzwc>



GROCER LOCK

Your Home Supermarket

REFERENCES: www.acssolution.cz



ACS
Solution

Richard ANDRES

V Horkách 1730/3
140 00 Praha 4
Česká Republika

tel. +420 773 833 388
email: andres@acssolution.cz
www.acssolution.cz

ACS
Solution

Zbyněk POCHMANN
manažer obchodu

Kočova 514 / 20
181 00 Praha 8
Česká Republika

tel. +420 776 784 744
email: pochmann@acssolution.cz
www.acssolution.cz